

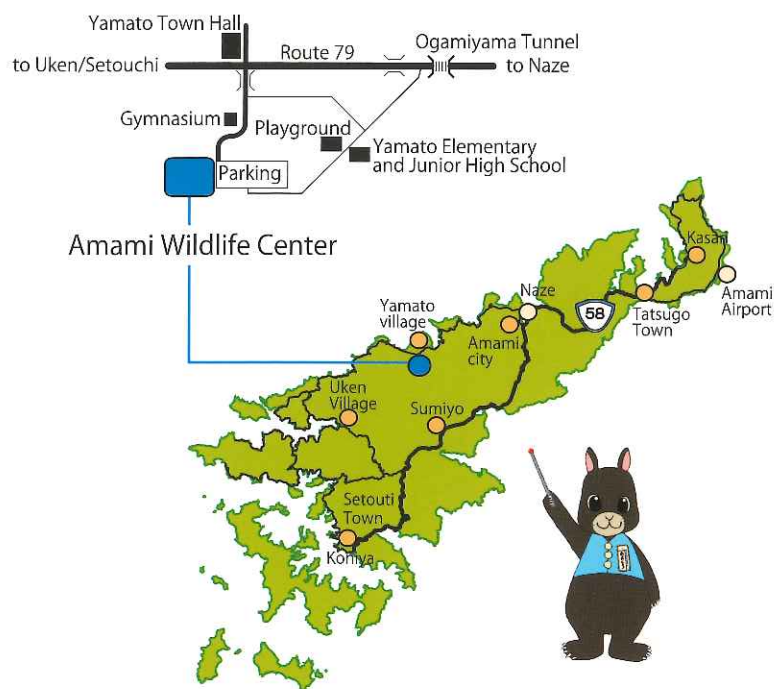


Hours of Operation

Open : 9:30 AM - 4:30 PM
Closed : Mondays (Except on Public Holidays)
Winter Holidays (Dec. 29 - Jan. 3)
Admission : Free

How to Get Here

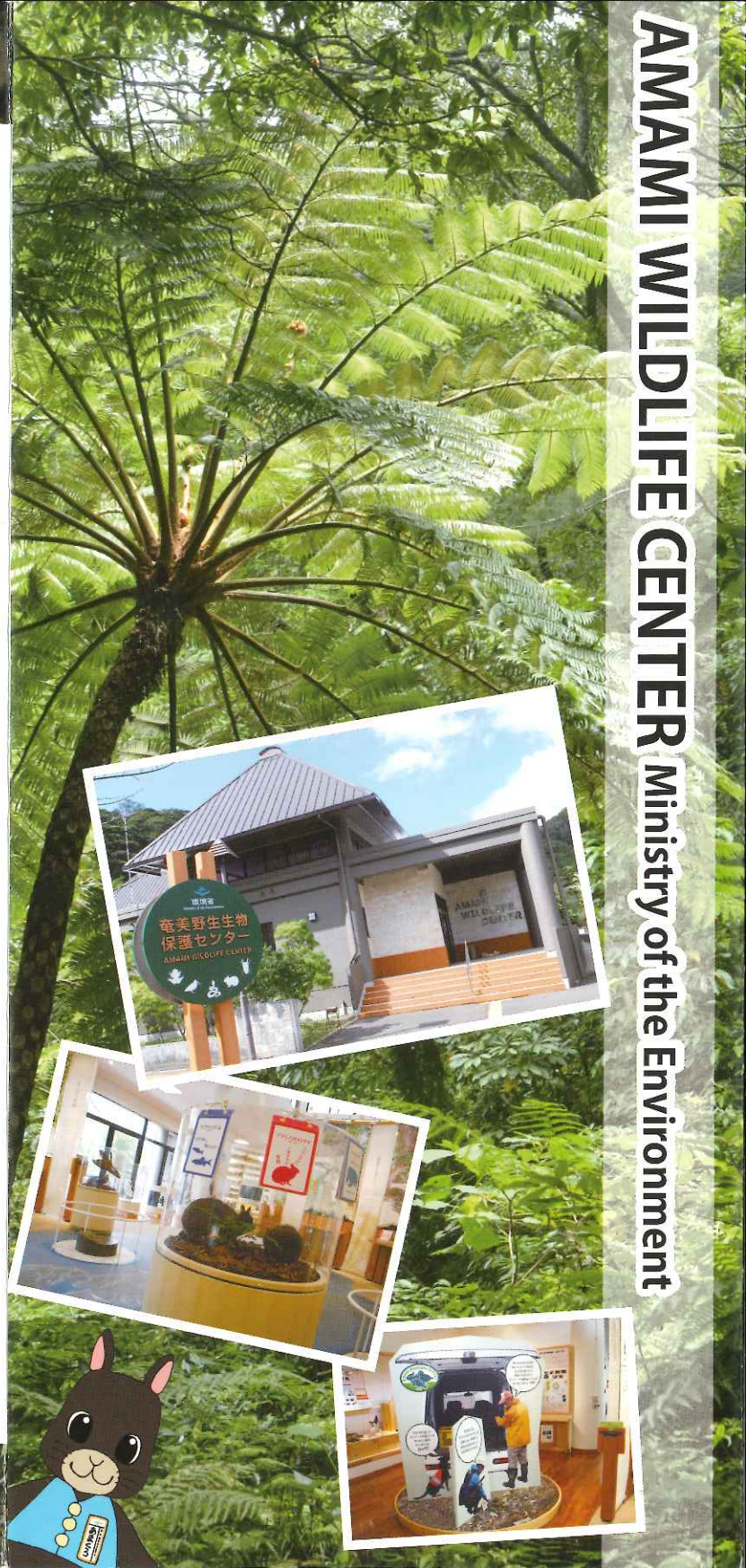
From Amami Airport : 1 hour 30 minutes
From Naze : 40 minutes
From Koniya : 1 hour 30 minutes



AMAMI WILDLIFE CENTER

Ministry of the Environment

551 Ongachi Koshinohata, Yamato-son,
Oshima-gun, Kagoshima 894-3104 Japan
TEL : 0997-55-8620 / FAX : 0997-55-8621
E-MAIL : RO-AMAMI@env.go.jp
<http://amami-wcc.net>



AMAMI WILDLIFE CENTER Ministry of the Environment

Welcome to Amami Wildlife Center!

The Amami Wildlife Center was founded by the Ministry of the Environment to protect the living creatures and nature in Amami. Some of the various activities the wildlife center conducts include researching the rare Amami Rabbit, monitoring the population of invasive alien species like the mongoose, educating the public through exhibitions and nature observations, and campaigning to register Ryukyu Archipelago as a UNESCO world Natural Heritage Site.

The Amami Islands



EXHIBITIONS

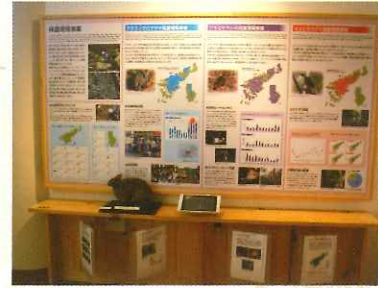


Mural, "A Drama of Flowers and Insects"

This expressive painting invites viewers to contemplate their connection to the natural world.

Insect Corner

Collections of insect species found on the Amami Islands are displayed here.



Research and Study Corner

This area displays current research being conducted by the wildlife center.



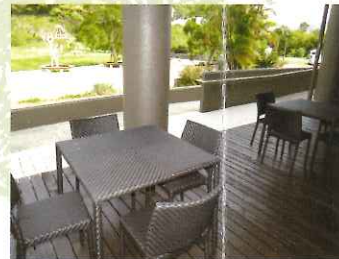
Wildlife Bulletin Board

Staff regularly update this board with news about wildlife. Visitors are also welcome to post relevant information here.



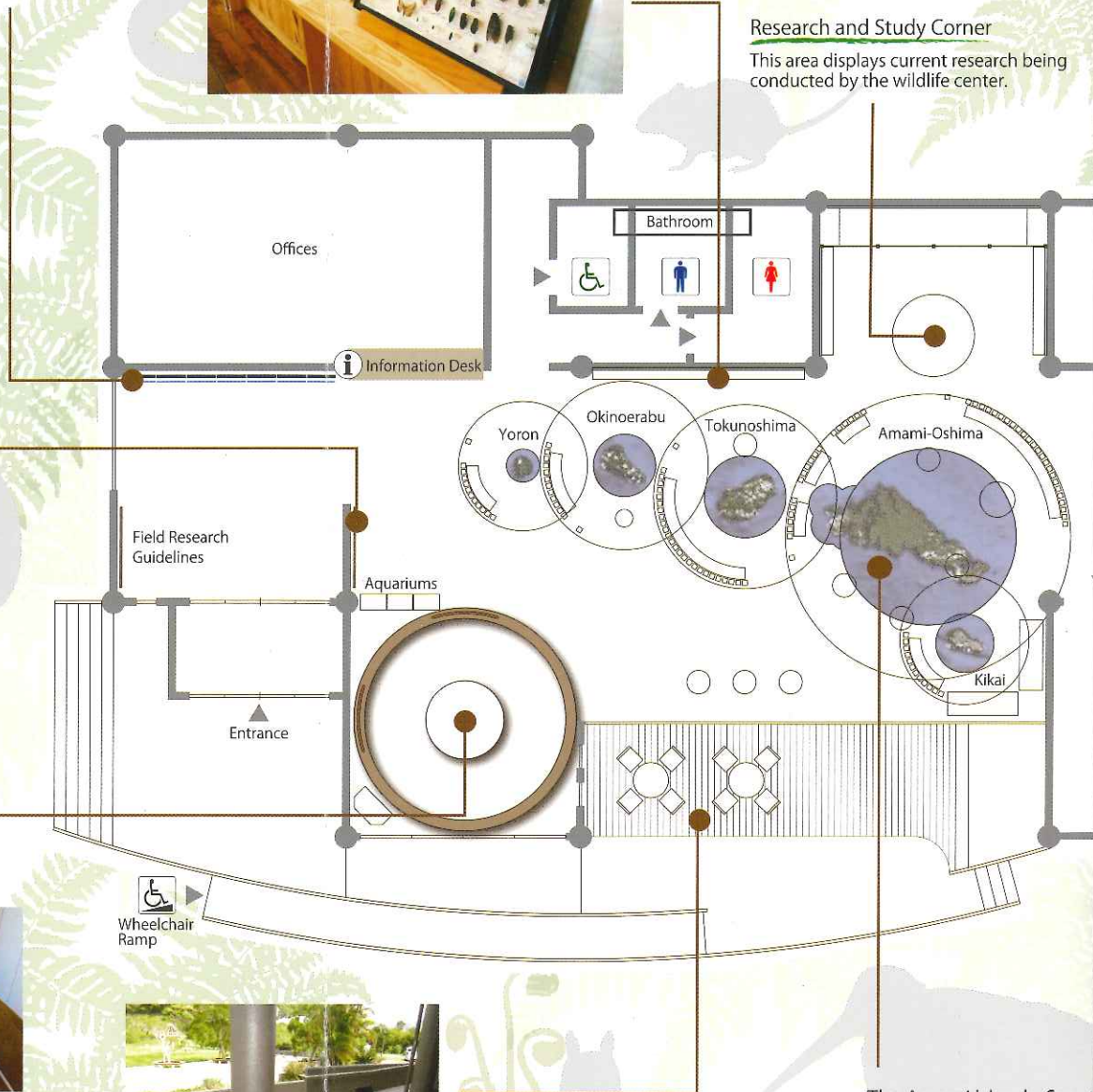
Library

This area contains many reference materials about wildlife living on the Amami Islands, ranging from picture books to stories about island folklore. A computer is also available.



Outdoor Seating Area

Visitors can relax and watch wild birds here.



The Amami Islands, Sanct

This exhibition highlights each island's ecosystem and culture to provide visitors with learning opportunities about the animals on the Amami Islands.

Plant Corner

Using the tablet provided, visitors can take a close look at different plants growing on the Amami Islands. The wildlife center's garden also contains an impressive variety of native plants.



Exhibition Room

Visitors can watch a short film about unique island nature and wildlife. Occasionally art exhibitions are held here.



Programs for Rehabilitation and Maintenance

The Species Conservation Law designates certain plants and animals in Japan as national endangered species. The Amami Wildlife Center takes protective measures to ensure the survival of these species, especially those facing a high risk of extinction. Through monitoring the populations and reproductive behaviors of these creatures, the wildlife center always keeps these species and their environment under close observation, preserving Amami's biodiversity for future generations.



Finding Amami Rabbit Droppings



A Family of Amami Woodcock captured by a camera trap



Reproductive Behavior of the Amami Thrush

Mongoose Eradication

The Invasive Alien Species Act designates the Small Indian Mongoose as an invasive species on the islands. To protect the balance of Amami-Oshima's ecosystem, an organization called the "Amami Mongoose Busters (AMB)" plays a major role in decreasing the mongoose population. The Amami Wildlife Center collaborates with AMB and other groups in hopes of eradicating this invasive alien species.



A Small Indian Mongoose



The Amami Mongoose Busters

Educational Outreach

Through distributing brochures, giving talks to school groups, and leading people on nature observations, the wildlife center raises awareness about the importance of protecting native plants and wildlife on the Amami Islands.



Environmental Brochures



A Nature Observation Trip



An Environmental Education Event



uary of Life

h of the Amami
n unique
lore. The tablet
about the various
s.